



PROFESSIONAL

ENGINEERING AND MANUFACTURING OF MINING BUCKETS



FRONT SHOVEL

for Caterpillar 6060/
Butyrus RH-340 (34 m³)



PROFESSIONAL LLC



2006

Date of
establishment

50 000 m²

Land area

35 000 m²

Manufacturing
workshops

14 000 buckets

(over 1,5 m³) - made
by the beginning
of 2019

6 000 m² -

Warehouse area

1 100

People - staff

40 m³

Capacity of the
biggest bucket made

PROFESSIONAL

Designs and produces buckets for mining equipment of different brands: Komatsu, Hitachi, Caterpillar, Liebherr, Volvo, Doosan, Hyundai etc.

Buckets are made of high strength and wear-resistance steel in compliance with all welding procedures and production technology that ensures high quality of our products.



DISCOVER THE ADVANTAGES OF OUR BUCKETS

RANGE OF PRODUCTS

We produce buckets from 1 m³ up to 40 m³ for construction and mining operations.

FIT TO ANY EARTH-MOVING EQUIPMENT

Vast data base includes technical details and specifications on most popular construction and mining machines.

USE OF BEST G.E.T.

Our company cooperates with all major G.E.T. manufacturers (Esco/Hensley/MTG/CQMS/Combi etc.).

HIGH-QUALITY

Our buckets are produced of high-strength and wear-resistant steel made in Germany and Japan in compliance with production technology and welding standards. We make 12 months warranty on all our products!

BEST LEAD TIME

We guarantee fixed production time.

COMPETITIVE PRICE

We offer best price/quality ratio.

FOCUS ON CUSTOMER

All buckets designed by Professional LLC are customized in order to meet client's requirements on commodity type, operating conditions and performance



PROFESSIONAL IN THE WORLD





OPTIM CRANE

50t
MS



AFRICA

GUINEA

YEAR OF COMMISSIONING: 2015

G.E.T.: HENSLEY

VOLUME: 6,7 M³

CUSTOMER: LEFA MINE

COMMODITY: GOLD ORE



Backhoe bucket
for **Komatsu PC-1250**

AFRICA

GHANA

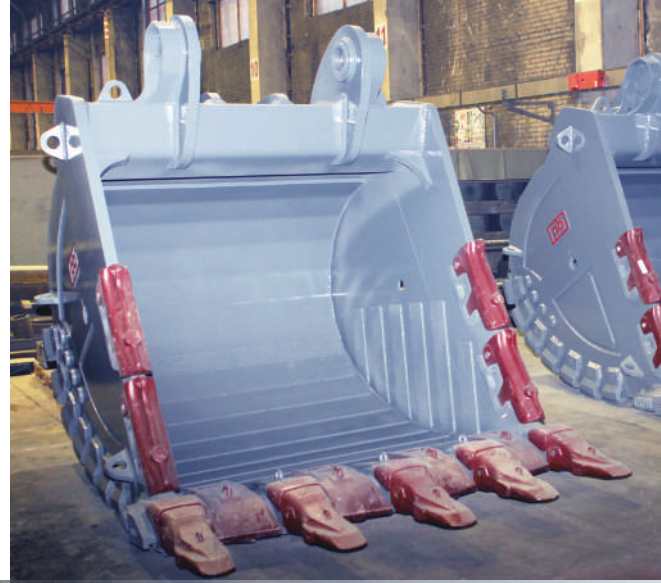
YEAR OF COMMISSIONING: 2015

G.E.T.: MTG

VOLUME: 7,0 M³

CUSTOMER: GOLDEN STAR RESOURCES

COMMODITY: GOLD ORE



Backhoe bucket
for **Liebherr R-984**



AFRICA

MAURITANIA

YEAR OF COMMISSIONING: 2018

G.E.T.: HENSLEY

VOLUME: 18 M³

CUSTOMER: SNIM

COMMODITY: IRON ORE



Front shovel bucket
for **Caterpillar 6050**

AFRICA

ANGOLA

YEAR OF COMMISSIONING: 2017

G.E.T.: MTG

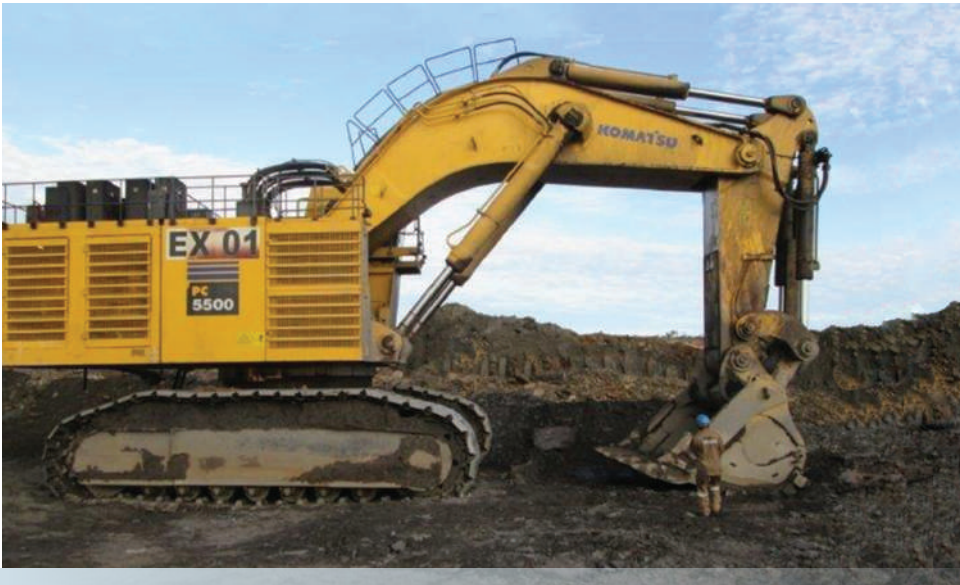
VOLUME: 20 M³

CUSTOMER: SOCIEDADE MINEIRA DE CATOCA

COMMODITY: DIMONDS



Front shovel bucket
for **Caterpillar 6040**



Backhoe bucket
for **Komatsu PC-5500**

AFRICA

ZAMBIA

YEAR OF COMMISSIONING: 2014

G.E.T.: HENSLEY

VOLUME: 28,0 M³

CUSTOMER: FIRST QUANTUM MINERALS LTD

COMMODITY: COPPER ORE





Front shovel bucket
for **Komatsu PC-4000**

AFRICA

SOUTH AFRICA

YEAR OF COMMISSIONING: 2018
G.E.T.: COMS
VOLUME: 15 M³
CUSTOMER: AFRICAN RAINBOW MINERALS
COMMODITY: IRON ORE





LHD bucket
for **Caterpillar R-2900**

AFRICA

GHANA

YEAR OF COMMISSIONING: 2015

VOLUME: 7,2 M³

CUSTOMER: GOLDEN STAR RESOURCES

COMMODITY: GOLD ORE





Backhoe bucket
for **Komatsu PC-1250**

AFRICA

BURKINA FASO

YEAR OF COMMISSIONING: 2015

G.E.T.: MTG

VOLUME: 6,7 M³

CUSTOMER: NORDGOLD - TAPARKO MINE

COMMODITY: GOLD ORE



AFRICA

DR CONGO

YEAR OF COMMISSIONING: 2015

G.E.T.: ESCO

VOLUME: 4,8 M³

CUSTOMER: DINTS INTERNATIONAL (UNITED KINGDOM) FOR EURASIAN RESOURCES GROUP

COMMODITY: COPPER ORE



Backhoe bucket
for **Caterpillar 385-C**

AFRICA

ANGOLA

YEAR OF COMMISSIONING: 2014

G.E.T.: BYG, ESCO

VOLUME: 13M³/ 14M³

CUSTOMER: SOCIEDADE MINEIRA DE CATOCA

COMMODITY: DIMONDS



Front shovel buckets
for **Liebherr R-9250**
and **R-9350**



Front shovel bucket
for **Hitachi EX-2500**

EUROPE

BULGARIA

YEAR OF COMMISSIONING: 2015

G.E.T.: HENSLEY

VOLUME: 15 M³

CUSTOMER: GEOTRADING AD

COMMODITY: COPPER ORE





Jaw for front shovel bucket
for **Caterpillar 6018**

EUROPE

MACEDONIA

YEAR OF COMMISSIONING: 2016

G.E.T.: ESCO

VOLUME: 10 M³

CUSTOMER: SSA SKOPJE (MACEDONIA) FOR
SOLWAY RESOURCES (MACEDONIA)

COMMODITY: COPPER ORE



EUROPE

UKRAINE

YEAR OF COMMISSIONING: 2013

G.E.T.: HENSLEY

VOLUME: 11,5 M³

CUSTOMER: METINVEST

COMMODITY: IRON ORE



Front shovel bucket
for **Komatsu PC-3000**

EUROPE

UKRAINE

YEAR OF COMMISSIONING: 2012

G.E.T.: HENSLEY

VOLUME: 15,0 M³

CUSTOMER: FERREXPO

COMMODITY: IRON ORE



Jaw for front shovel bucket
for **Komatsu PC-4000**



Front shovel bucket
for **Hitachi EX-3600**

EUROPE

UKRAINE

YEAR OF COMMISSIONING: 2013

G.E.T.: ESCO

VOLUME: 15,5 M³

CUSTOMER: METINVEST

COMMODITY: IRON ORE





Front shovel bucket
for **Hitachi EX-3600**

EUROPE

UKRAINE

YEAR OF COMMISSIONING: 2014

G.E.T.: ESCO

VOLUME: 10,5 M³

CUSTOMER: METINVEST

COMMODITY: IRON ORE



CENTRAL ASIA

ARMENIA

YEAR OF COMMISSIONING: 2013

G.E.T.: HENSLEY

VOLUME: 6,7 M³

CUSTOMER: GPM GOLD

COMMODITY: COPPER ORE



Backhoe bucket
for **Komatsu PC-1250**

CENTRAL ASIA

ARMENIA

YEAR OF COMMISSIONING: 2013

G.E.T.: HENSLEY

VOLUME: 10,0 M³

CUSTOMER: GPM GOLD

COMMODITY: COPPER ORE



Jaw for front shovel bucket
for **Busyrus RH-90**



Backhoe bucket
for **Komatsu PC-2000-8**

CENTRAL ASIA

ARMENIA

YEAR OF COMMISSIONING: 2014

G.E.T.: MTG

VOLUME: 12 M³

CUSTOMER: GEOPROMING

COMMODITY: GOLD ORE





Front shovel bucket
for **Caterpillar 385-FS**

CENTRAL ASIA

ARMENIA

YEAR OF COMMISSIONING: 2014

G.E.T.: CATERPILLAR

VOLUME: 5,2 M³

CUSTOMER: GEOPROMINING

COMMODITY: COPPER ORE



CENTRAL ASIA

KAZAKHSTAN

YEAR OF COMMISSIONING: 2015

G.E.T.: MTG

VOLUME: 12 M³

CUSTOMER: ALTYNALMAS

COMMODITY: GOLD ORE



Backhoe bucket
for **Hitachi EX-1900**

CENTRAL ASIA

KAZAKHSTAN

YEAR OF COMMISSIONING: 2014

G.E.T.: ESCO

VOLUME: 14 M³

CUSTOMER: POLYMETAL

COMMODITY: GOLD ORE



Front shovel bucket
for **Busyrus RH-90**



Backhoe bucket
for **Hitachi EX-2600**

CENTRAL ASIA

KAZAKHSTAN

YEAR OF COMMISSIONING: 2013
G.E.T.: ESCO
VOLUME: 15 M³
CUSTOMER: GLENCORE XSTRATA
GROUP - ALTYNTAU
COMMODITY: GOLD ORE





Jaw for front shovel bucket
for **Hitachi EX-2600**

CENTRAL ASIA

KAZAKHSTAN

YEAR OF COMMISSIONING: 2013

G.E.T.: ESCO

VOLUME: 15 M³

**CUSTOMER: GLENCORE XSTRATA
GROUP - ALTYNTAU**

COMMODITY: GOLD ORE



CENTRAL ASIA

KAZAKHSTAN

YEAR OF COMMISSIONING: 2012

G.E.T.: ESCO

VOLUME: 15 M³

CUSTOMER: GLENCORE XSTRATA
GROUP - ALTYNTAU

COMMODITY: GOLD ORE



Jaw for front shovel bucket
for **Caterpillar 6030/**
Busyrus RH-120

CENTRAL ASIA

KAZAKHSTAN

YEAR OF COMMISSIONING: 2012

G.E.T.: ESCO

VOLUME: 15 M³

CUSTOMER: KAZAKHMYS

COMMODITY: COPPER ORE



Jaw for front shovel bucket
for **Liebherr R-9250**



Front shovel buckets
for **Hitachi EX-3600**

CENTRAL ASIA

KYRGYZSTAN

YEAR OF COMMISSIONING: 2016
G.E.T.: ESCO
VOLUME: 24 M³
CUSTOMER: CENTERRA GOLD – KUMTOR
COMMODITY: GOLD ORE





Front shovel buckets
for **Liebherr R-9350**

CENTRAL ASIA

KYRGYZSTAN

YEAR OF COMMISSIONING: 2016

G.E.T.: ESCO

VOLUME: 18 M³

CUSTOMER: CENTERRA GOLD – KUMTOR

COMMODITY: GOLD ORE



CENTRAL ASIA

KYRGYZSTAN

YEAR OF COMMISSIONING: 2015

G.E.T.: MTG

VOLUME: 5,9 M³

CUSTOMER: KAZAKHMYS GOLD KYRGYZSTAN

COMMODITY: GOLD ORE



Front shovel bucket
for **Hitachi EX-1200**

ASIA

MONGOLIA

YEAR OF COMMISSIONING: 2014
G.E.T.: MTG
VOLUME: 13,0 M³
CUSTOMER: ZAMINE
COMMODITY: IRON ORE



Backhoe bucket
for **Hitachi EX-2600**





Jaws for front shovel buckets
for **Caterpillar 6060/
RH-340**

ASIA

MONGOLIA

YEAR OF COMMISSIONING: 2016
G.E.T.: ESCO
VOLUME: 34,0 M³
CUSTOMER: RIO TINTO
COMMODITY: COPPER ORE





Backhoe bucket
for **Hitachi EX-1200**

ASIA

MONGOLIA

YEAR OF COMMISSIONING: 2016
G.E.T.: ESCO
VOLUME: 6,7 M³
CUSTOMER: ZAMINE



ASIA

MYANMAR

YEAR OF COMMISSIONING: 2016

G.E.T.: HENSLEY

VOLUME: 12,0 M³

CUSTOMER: JADE MINING



Backhoe bucket
for **Komatsu PC-2000**

ASIA

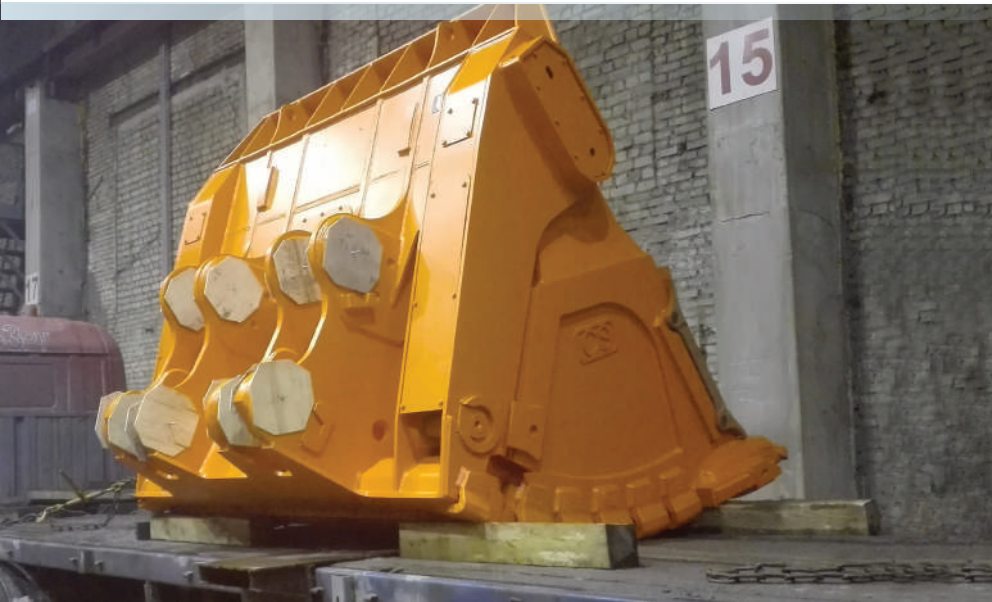
CHINA

YEAR OF COMMISSIONING: 2015

G.E.T.: ESCO

VOLUME: 6,5 M³

COMMODITY: IRON ORE



Front shovel bucket
for **Hitachi EX-1200**



Jaw for front shovel bucket
for **Hitachi EX-1200**

NORTH AMERICA

USA

YEAR OF COMMISSIONING: 2014

G.E.T.: COMBI

VOLUME: 5,9 M³

CUSTOMER: COMBI WEAR PARTS (SWEDEN)

COMMODITY: GOLD ORE





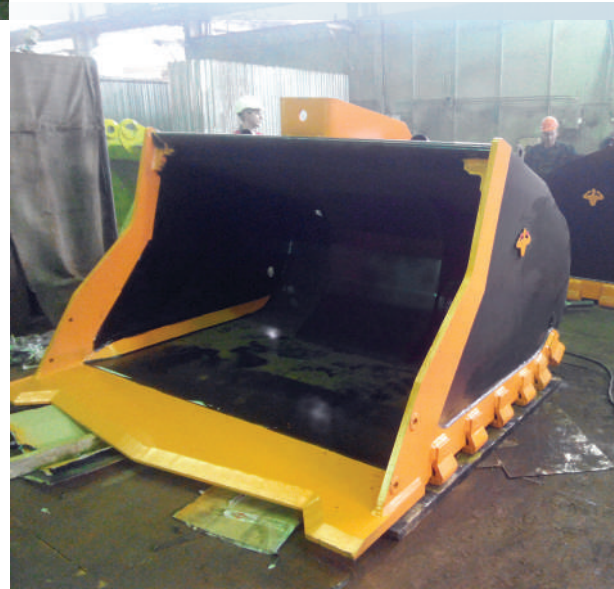
Buckets for LHD
for **Sandvik LH-410**



OCEANIA

THE PHILIPPINES

YEAR OF COMMISSIONING: 2014
VOLUME: 5,4 M³
CUSTOMER: COMBI WEAR PARTS (SWEDEN)
COMMODITY: GOLD ORE



OCEANIA

THE PHILIPPINES

YEAR OF COMMISSIONING: 2016

G.E.T.: J550

VOLUME: 6,8 M³

CUSTOMER: PHILIPPINE GOLD PROCESSING &
REFINING CORP. (PGPRC)

COMMODITY: GOLD ORE



Loader bucket
for **Komatsu WA-600**

SOUTH AMERICA

GUYANA

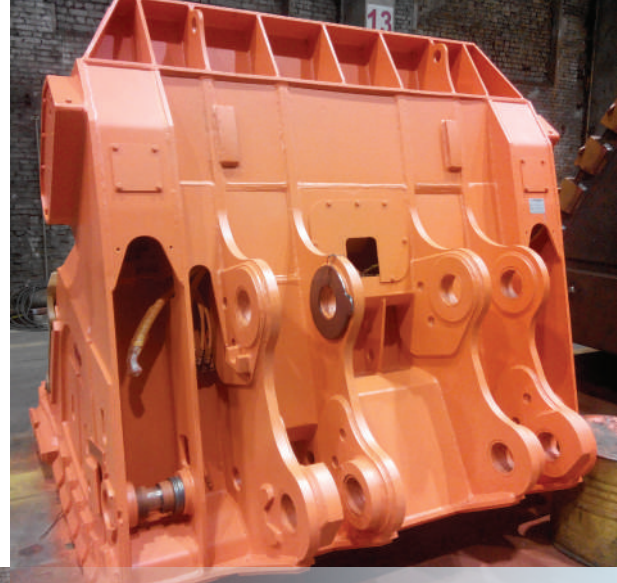
YEAR OF COMMISSIONING: 2016

G.E.T.: MTG

VOLUME: 5,9 M³

CUSTOMER: RUSAL-BCGI

COMMODITY: BAUXITE ORE



Front shovel bucket
for **Hitachi EX-1200**



Backhoe bucket for
Caterpillar 345-C

SOUTH AMERICA

ARGENTINA

YEAR OF COMMISSIONING: 2015
G.E.T.: CATERPILLAR
VOLUME: 2,8 M³
CUSTOMER: H.C.PUMPER SA. STONE QUARRY





Backhoe bucket for
Komatsu PC-2000

SOUTH AMERICA

PERU

YEAR OF COMMISSIONING: 2014

G.E.T. HENSLEY

VOLUME – 12 M³





PROFESSIONAL LLC

ADDRESS: KOLLEKTIVNAYA ST., 3 B,
IVANOVO, RUSSIA, 153043

TEL/FAX +74932353500

E-MAIL: info@profdst.ru

www.en.profdst.ru

